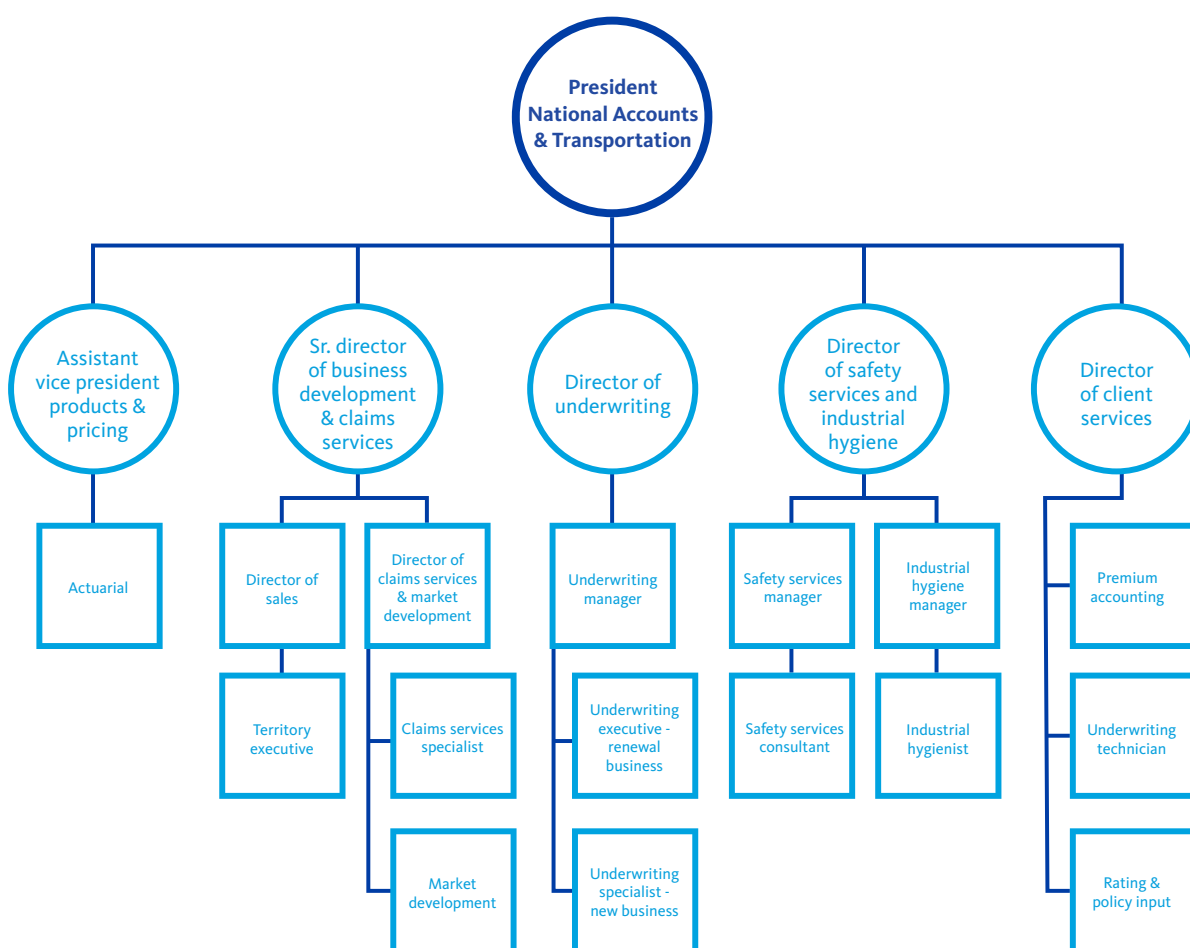




Structured to serve you

At Sentry, our National Accounts organizational structure helps us share our industry experience and knowledge with you. Our management team builds strong relationships through direct contact with associates, brokers, and clients—making it possible for us to be responsive to your preferences and flexible to changing market conditions.

OUR MANAGEMENT STRUCTURE IS TRANSPARENT AND DESIGNED WITH YOU IN MIND.

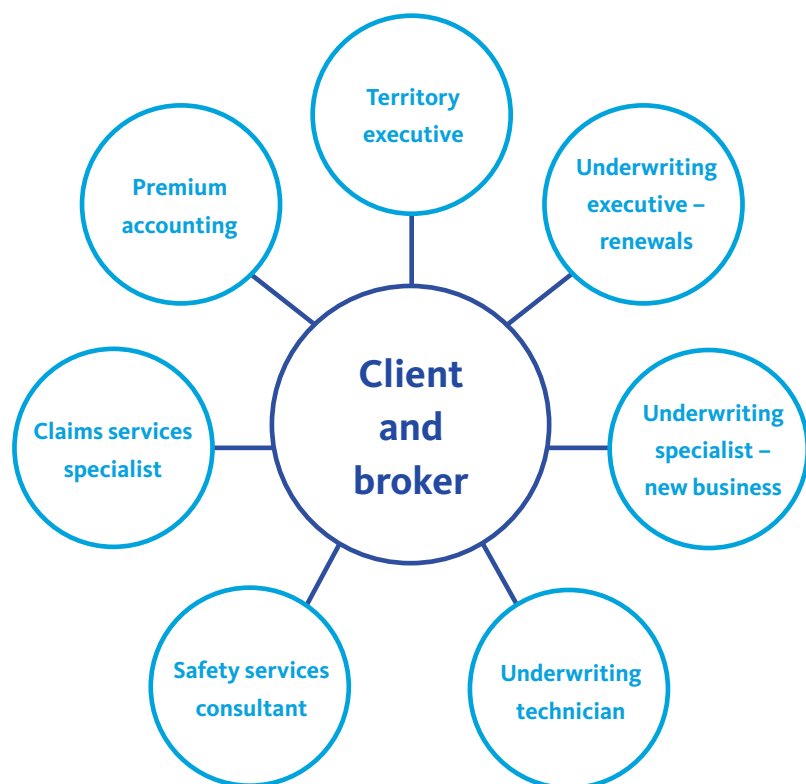




Meaningful—and lasting—relationships with you

When you insure with us, you'll work with a specific team of experienced professionals. This means you'll know the people answering your phone calls and administering your policy. Our designated service team model allows us to focus on your needs and help you manage risk. In addition to this personalized service model, we're committed to technology investments that help us engage with you and improve your experience.

YOU'LL HAVE DIRECT CONNECTION TO OUR KNOWLEDGEABLE AND EXPERIENCED ASSOCIATES.



Property and casualty coverages are underwritten, and safety services are provided, by a member of the Sentry Insurance Group, Stevens Point, WI. For a complete listing of companies, visit [sentry.com](https://www.sentry.com). Policies, coverages, benefits, and discounts are not available in all states. See policy for complete coverage details.